



### Boat Details

|                                      |  |                 |
|--------------------------------------|--|-----------------|
| <b>Builder</b>                       | ABEKING & RASMUSSEN  |                 |
| <b>Base Port</b>                     | Athens   |                 |
| <b>Destination</b>                   | Turkey, Dodacanese Islands, Athens, Ionian Islands, Cyclades |                 |
| <b>Length</b>                        | 52.0 m / 171.0 ft  |                 |
| <b>Built / Refit</b>                 | 2009   |                 |
| <b>Cabins Total</b>                  | 6  |                 |
| <b>Cabins</b>                        | 1 Master, 2 Vip, 3 Double                                    |                 |
| <b>Guests</b>                        | 12   |                 |
| <b>Crew</b>                          | 10   |                 |
| <b>Speed</b>                         | 16-24 Knots  |                 |
| <b>Low Season</b><br>May, October    | <b>Per Week</b>  | <b>€280,000</b> |
| <b>Mid Season</b><br>June, September | <b>Per Week</b>  | <b>€280,000</b> |
| <b>High Season</b><br>July, August   | <b>Per Week</b>  | <b>€310,000</b> |

Features

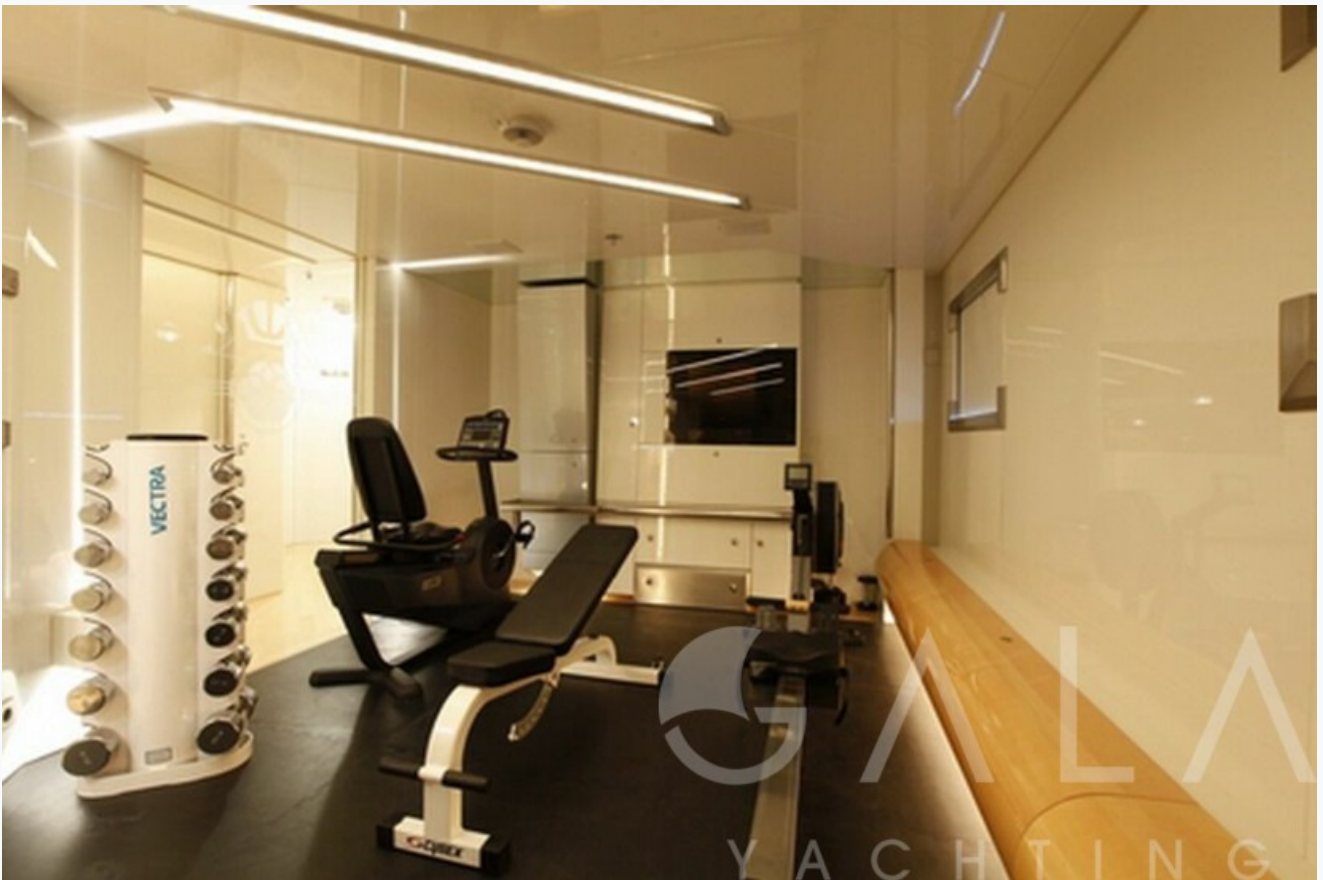


















## Specifications

**Built / Refit**

2009

**Builder**

ABEKING &amp; RASMUSSEN

**Base Port**

Athens

**Length**

52.0 m / 171.0 ft

**Beam**

10.3 m / 34 ft

**Draft**

3.5 m / 11 ft

**Speed**

16-24 Knots

**Main Engine(s)**

2 X CAT 3516 DI-TA

**Fuel Consumption**

750 lt at cruising

**Generator(s)**

2 X 160 KW CAT, 1 X 50 KW CAT

## Accommodation

**Cabins**

1 Master, 2 Vip, 3 Double

**Guests**

12

**Crew**

10

**Bathroom**

Ensuite with hydromassage shower cells

**Toilet type**

Electric vacuum flush

**Air-conditioning**

Yes

**A/C Use during night**

All night

**TV System**

In salon and all cabins, Sattelite TV, In Salon and Master cabin

**Music System**

In salon, All cabins, Deck speakers

**Other Equipment**

Minibar in each cabin, Ice machine, CD player, DVD player, Filter coffee machine, Wine cooler, Service phone in cabins, Internet connection, Hair dryers, CD/DVD player in each cabin, Safe box in each cabin

## Tenders & Toys

**Tenders**

1 X NE 50 Jet 5.10m, 1 X 6.15m Searay 195

**Water Toys**

2 X Wave Runner, Water Skis, Tubes, Banana, Wakeboard

**Deck Equipment**

Jacuzzi on flybridge, Fishing tackle, Sun awnings, Sun mattresses, Deck shower, Sea ladder, Massage saloon

## Destinations & Prices

### Cruising Areas

Turkey, Dodacanese Islands, Athens, Ionian Islands, Cyclades

### Charter Prices

€280,000 per week (Low Season: May, October)

€280,000 per week (Mid Season: June, September)

€310,000 per week (High Season: July, August)

### Charter Terms

#### MYBA Terms:

**The Charter Fee includes** the charter of the yacht with all its equipment in working order, tools, stores, cleaning material and basic consumable stores for engine-room, deck and cabins, etc., the crew's wages, food and the insurance of the yacht for marine risk and third party claims and the crew for employer's liability insurance.

#### VAT 12 % is not included in charter rate

**APA (Advance Provisioning Allowance):** The Charterer will be charged extra, at cost to the yacht, for all other expenses, which is covered by the APA , 30 % of the charter fee. These expenses include fuel for the yacht, fuel for the ski-boats or other tenders, food for the charterers, wines, beers, spirits and soft drinks for the Charterers, other consumable stores, berthing dues and other harbour charges away from the yacht's own berth, hire costs of special equipment placed on board at the request of the Charterer.

