



Boat Details

Builder	LURSSSEN
Base Port	Bodrum
Destination	N/A
Length	48.8 m / 160.0 ft
Built / Refit	2012 / 2019
Cabins Total	5
Cabins	1 Master, 2 Vip, 2 Twin
Guests	10
Speed	12-15 Knots
Low Season May, October	Per Week €100,000
Mid Season June, September	Per Week €110,000
High Season July, August	Per Week €120,000

Features













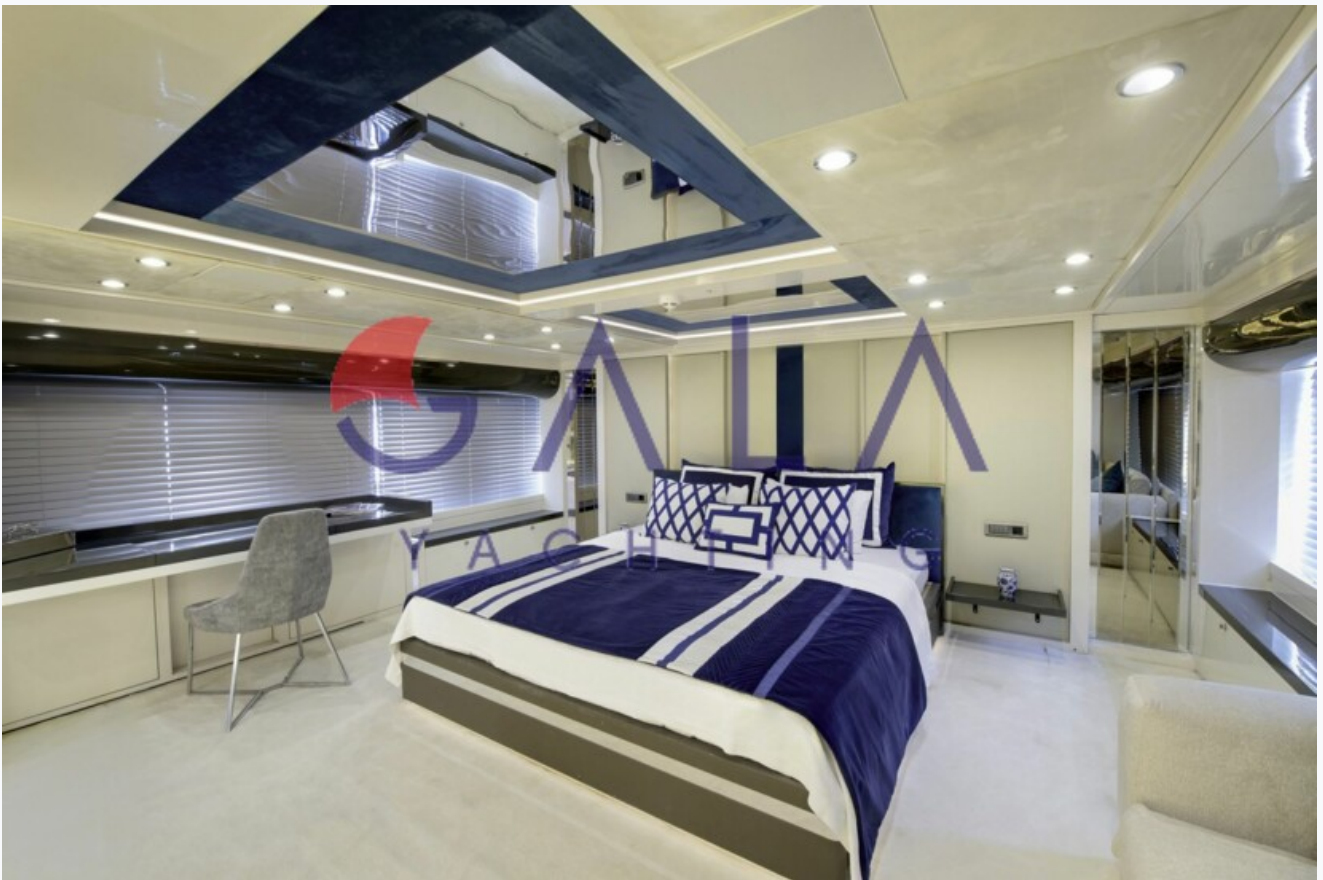
























Specifications

Built / Refit

2012 / 2019

Builder

LURSSSEN

Base Port

Bodrum

Length

48.8 m / 160.0 ft

Beam

7.35 m / 24 ft

Draft

2.5 m / 8 ft

Speed

12-15 Knots

Main Engine(s)

2 x MAN 1450 HP Dos (2) De Doce 12 Cycles

Fuel Consumption

320 lt at max speed

Generator(s)

2 X 47 Kw Albo Marine

Hull

Steel

Accommodation

Cabins

1 Master, 2 Vip, 2 Twin

Guests

10

Bathroom

Ensuite with shower cells

Toilet type

Electric vacuum flush

Air-conditioning

Yes, individually controlled in all cabins

A/C Use during night

All night

TV System

In salon and all cabins

Music System

In salon, All cabins, Deck speakers

Tenders & Toys

Tenders

WILLIAMS 110 Hp, Joker Boat 30 HP Evenrude

Water Toys

Jet-Ski, Water-ski

Deck Equipment

Jacuzzi on flybridge, Deck shower, Watermaker, Zero Speed Stabilizers

Destinations & Prices

Charter Prices

€100,000 per week (Low Season: May, October)
 €110,000 per week (Mid Season: June, September)
 €120,000 per week (High Season: July, August)

Charter Terms

Mediterranean Terms (MYBA)

The Charter Fee includes the charter of the yacht with all its equipment in working order, tools, stores, cleaning material and basic consumable stores for engine-room, deck and cabins, etc., the crew's wages, food and the insurance of the yacht for marine risk and third party claims and the crew for employer's liability insurance.

APA (Advance Provisioning Allowance): The Charterer will be charged extra, at cost to the yacht, for all other expenses, which is covered by the APA , 25 % of the charter fee. These expenses include fuel for the yacht, fuel for the ski-boats or other tenders, food for the charterers, wines, beers, spirits and soft drinks for the Charterers, other consumable stores, berthing dues and other harbour charges away from the yacht's own berth, including pilotage fees and charges for water and/or electricity taken from the shore, laundry, telephone, fax or telex via Satcom, Radio Telephone or telex costs, hire costs of special equipment placed on board at the request of the Charterer.

